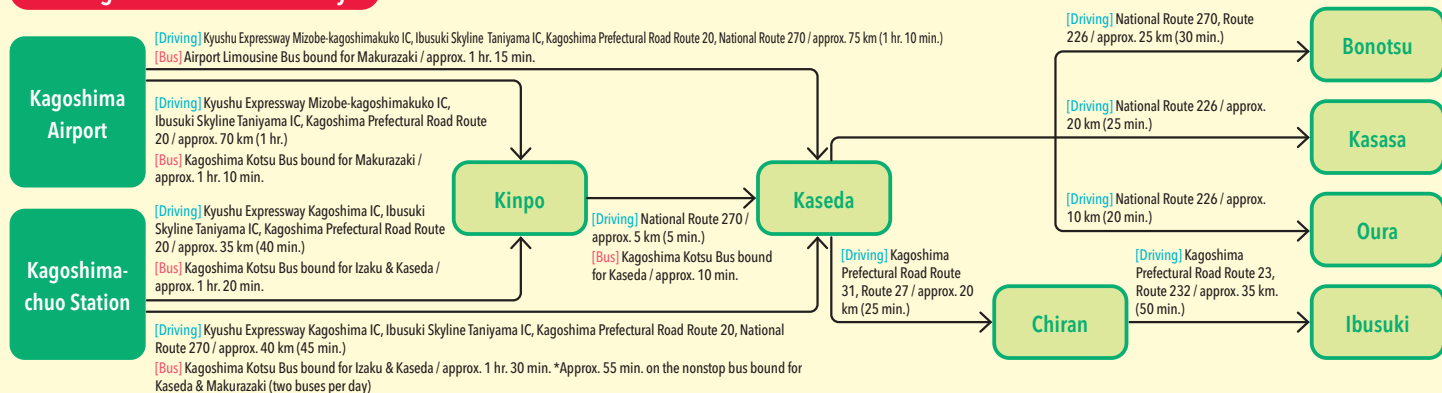


Getting to Minamisatsuma City



Minamisatsuma City Information

| | |
|---|---|
| Kaseda | wakula |
| Kaseda Hotel Yoshiya | Minshuku MAP Back D2 |
| Business hotel | 3704 Kaseda Tsunuki HP https://wa-ku-la.com |
| 44-20 Kaseda Honcho ☎ 0993-53-5527 | |
| City Hotel KASEDA | Kaseda Exchange Center Sunpal |
| Business hotel MAP Front B2 | Ryokan MAP Back D1 |
| 44-5 Kaseda Honcho ☎ 0993-52-2576 | 1952-2 Kaseda Takahashi ☎ 0993-53-8739 |
| Takeya Ryokan | Fukiagehama Seaside Park Campground |
| Ryokan MAP Front B2 | Campground MAP Back D1 |
| 11-1 Kaseda Honcho ☎ 0993-53-3131 | 1936-2 Kaseda Takahashi ☎ 0993-52-7600 |
| Carstay HISAGO | Oura |
| Overnight parking facility MAP Front B2 | Yuhinkan |
| 5-15 Kaseda Honcho ☎ 090-7150-7222 | Ryokan MAP Back C2 |
| Nissinkan | 24593 Ouracho ☎ 0993-62-2100 |
| Business hotel MAP Front C1 | Kinpo |
| 1-9-16 Kaseda Murahara ☎ 0993-53-6611 | Onsen Exchange Village Minamisatsuma Inaho-kan |
| Matsuya Ryokan | Ryokan MAP Back E1 |
| Ryokan MAP Back D2 | 1430 Kinpocho Uranomyo ☎ 0993-77-2611 |
| 5636-1 Kaseda Tojinbara ☎ 0993-52-2710 | Jack and the Beanstalk |
| Murata Ryokan | Minshuku MAP Back E1 |
| Ryokan MAP Back D2 | 2165-1 Kinpocho Daizaka ☎ 099-263-5523 (Hamamoto Corp.) |
| 5640 Kaseda Tojinbara ☎ 0993-53-3321 | Inakaya |
| Guesthouse Akari | Minshuku MAP Back D1 |
| Guesthouse MAP Back D2 | 290 Kinpocho Ikebe ☎ 0993-77-3887 |
| 5848 Kaseda Tojinbara ☎ 0993-52-0294 (Akari-ai) | Bonotsu |
| Farm Minshuku Keshikino | Minshuku Ganjin-so |
| Minshuku MAP Back D2 | Minshuku MAP Back B3 |
| 2176 Kaseda Tojinbara ☎ 0993-53-3881 | 400 Bonotsucho Akime ☎ 0993-68-0652 |
| AUTO.S Campground | Narumi Ryokan |
| Campground MAP Back D2 | Ryokan MAP Back C4 |
| 17980 Kaseda Takeda ☎ 0993-53-3875 | 8941-3 Bonotsucho Tomari ☎ 0993-67-0055 |
| SUNSTAY KASEDA | Guesthouse Teradaya |
| Business hotel MAP Front C2 | Guesthouse MAP Back C4 |
| 12-9 Kaseda Higashihoncho ☎ 0993-53-8000 | 5793 Bonotsucho Bo ☎ 0993-67-0021 |

Published by the Tourism and Exchange Section, Minamisatsuma City

2648 Kaseda Kawabata, Minamisatsuma City, Kagoshima, 897-8501

HP ▶ <http://www.city.minamisatsuma.lg.jp/>

Mail ▶ e_kankou@city.minamisatsuma.lg.jp

TEL ▶ 0993-53-2111 FAX ▶ 0993-53-5465

Kasasa Branch Office (Civic Affairs Section) 808 Kasasacho Kataura, Minamisatsuma City, Kagoshima TEL 0993-63-1111

Oura Branch Office (Civic Affairs Section) 2071 Ouracho, Minamisatsuma City, Kagoshima TEL 0993-62-2111

Bonotsu Branch Office (Civic Affairs Section) 9422-2 Bonotsucho Bo, Minamisatsuma City, Kagoshima TEL 0993-67-1441

Kinpo Branch Office (Civic Affairs Section) 1650 Kinpocho Okudari, Minamisatsuma City, Kagoshima TEL 0993-77-1111

Planned, edited, and produced by JTB Publishing Inc.

©2021 Tourism and Exchange Section, Minamisatsuma City

*The information contained in this publication is up to date as of September 2021. Some information may have changed after publication; we recommend calling in advance to confirm. We take no responsibility for any damages, etc. incurred due to the content of this publication and cannot provide compensation under any circumstances. *Entry and other fees listed in this publication are the price for one adult. These prices generally include consumption tax, which was checked at the time of research. *In general, the year-end and New Year's holiday, Obon summer holiday, and Golden Week (late April to early May) are not mentioned in the descriptions of regular closures. *Hours, unless otherwise mentioned, generally refer to the time of store (facility) opening until store (facility) closure. Please note that it is common for establishments to stop taking food orders or admit entry from 30 minutes to one hour prior to closing time. *Transportation times are approximate and are subject to change depending on the season, impact of weather, and/or other factors; we recommend confirming in advance with public transport facilities. **マツコード and *MAPCODE are registered trademarks of DENSO Corporation. **QR Code is a registered trademark of DENSO WAVE INCORPORATED. *The content of this publication may have changed due to measures for preventing the spread of COVID-19.



Special Edition

KAGOSHIMA

MINAMI SATSUMA CITY

One of Japan's largest

sand sculpture events



Blue ocean, green fields—majestic natural beauty awaits!



The main islands' southernmost

Japanese whisky distillery



Visit the filming location of

You Only Live Twice

Check!



Check out the audio guide for attraction information!



Approx. 80 min. on the Shinkansen from Hakata Station to Kagoshima-chuo Station

Approx. 50 min. from Fukuoka Airport to Kagoshima Airport

Minamisatsuma City is here!

Includes the MAPCODE for each location for easy lookup on your car navigation system!

Take a leisurely tour of the city

BICYCLE FRIENDLY CITY

Bicycles are a great way to explore the city efficiently. There are dedicated bike lanes, and you can rent an electric assist bike, sports bike, or whatever bike suits your needs. Enjoy cycling around the city while visiting cafes and historical sites.

There's more!
Tons of exciting cycling routes!

Check it out!



Take a short break at a tropical cafe

SUNSEAS
☎ 050-3702-0345 (MAP) Front A2 ☎ 198 608 074*44

Tikis depicting Hawaiian gods greet you at the entrance to this tropical-themed cafe. Try the house-roasted Kona coffee blend (650 yen), organic banana smoothie (550 yen), or Hawaiian-style donut (190 yen).

☎ 2666-5 Kaseda Jitoshō ☎ 10am-4pm
☎ Mon., other temporary closures
☎ 5 spaces

Enjoy the uniquely sweet aroma of Hawaiian Kona coffee!

Stroll down a samurai street listed as a Japan Heritage Site

Kaseda Fumoto Samurai District
☎ 0993-53-3751 (Minamisatsuma Tourism Association)
☎ 0993-52-7829 (Kaseda Inishie Guides)
MAP Front A4 ☎ 198 578 104*37 (Former Aisaka Residence)

This is one of the historical samurai districts, known as *fumoto*, that can still be found across Kagoshima Prefecture. A unique feature of Kaseda Fumoto is its waterways crossed with stone bridges that lead to the gates of each house.

☎ Kaseda Takeda ☎ ☎ Free entry ☎ 20 spaces



Stone walls and hedges face the waterway

Rent a bike here!

Cycling Terminal Rinrin

●サイクリングターミナル リンリン
☎ 0993-53-8739 (Sumpul)
MAP Back D1 ☎ 198 665 109*22

Prices Starting at 200 yen for 2 hours
No. of bikes 92 (e-bikes, electric assist bikes, cross bikes, bikes for toddlers and children)
☎ 1952-2 Kaseda Takahashi
☎ 9am-5pm
☎ Dec. 31
☎ 30 spaces



Minamisatsuma Tourism Association

●南さつま市観光協会
☎ 0993-53-3751
MAP Front B2 ☎ 198 578 744*05

Prices 200 yen (up to 2 hours, 100 yen for every additional hour)
No. of bikes 10 (city bikes)
☎ 34-2 Kaseda Honmachi
☎ 9am-5pm *Rental available until 4pm, bikes must be returned by 4:30pm
☎ Mon.
☎ 5 spaces



Fukiagehama Seaside Park Cycling Center

●吹上浜海公園サイクルセンター
☎ 0993-52-0910
MAP Back D1 ☎ 198 664 084*03

Prices 230 yen (up to 2 hours, 50 yen for every additional 30 min.)
No. of bikes Approx. 240 (adult bikes, bikes for children, bikes with training wheels)
☎ 1936-2 Kaseda Takahashi
☎ 9am-4:30pm (open until 5:30pm on weekends and national holidays in April, May, June, and September; open until 6:30pm in July and August) *Rental available until 1 hour before closing, bikes must be returned 30 minutes before closing
☎ Dec. 29-31 ☎ Approx. 1,000 spaces
*Cycling allowed within the park only



Visit a historical shrine associated with Jishinko

Takeda Jinja
☎ 0993-52-2841 (Takeda Jinja)
MAP Front A4 ☎ 198 548 754*71

This shrine is dedicated to Shimazu Tadayoshi (Jishinko), a feudal lord who presided over the Shimazu clan during Japan's Sengoku period (from the late 15th to late 16th century). Stone monuments inscribed with the Jishinko Iroha-uta, poems which became the ethical foundation of the Satsuma Domain, can be found along Inishie-no-Michi, a path within the shrine grounds lined with *inumaki* (Buddhist pine) trees.

☎ 17932 Kaseda Takeda ☎ ☎ Free entry ☎ 25 spaces



In the summer, a dance called the Samurai Odori is performed as an offering to the shrine. The 400-year-old dance is an Intangible Folk Cultural Property of Kagoshima

Beautiful dappled sunlight shines on Inishie-no-Michi. Stone monuments inscribed with the 47 Iroha-uta poems



Go by RinRin Road

RinRin Road (MAP) Back D2 is an approx. 2.5 km cycling and pedestrian path that connects Kaseda's coastal area to the city center. Ornamental cherry trees along the road blossom in spring, making it an Instagram-worthy photo spot.



Nothing beats biking through a flurry of cherry blossoms!

A long-standing store that continues to make Kagoshima's sweet soy sauce

Chojiya
☎ 0993-53-2711 (MAP) Back D2 ☎ 198 605 681*43

Founded in 1735, this long-standing store has passed down the taste of its soy sauce from generation to generation. Their handmade soy sauce has many fans who swear by it. You can explore several stone storehouses on the property that were built in the late 19th and early 20th centuries.

☎ 6032 Kaseda Tojinbara ☎ 8am-6pm ☎ 2nd Sat. of each month (open during busy season), Sun., and national holidays ☎ 10 spaces

The stone storehouse in front of the store is also a Tangible Cultural Property of Japan



The store also sells candy!
The *tsuyu* and *namami* vinegar set (1,100 yen) is a popular product

A long-standing confectioner founded in 1849

Odaya Banseiten
☎ 0993-52-2728 (MAP) Back D2 ☎ 198 605 705*53

The store regularly offers about 70 varieties of Japanese and Western sweets, including Satsuma Wakaayu, their signature product. Many sweets are made from local products produced in Minamisatsuma City and neighboring areas such as Chiran and Ibusuki, making them great souvenirs.

☎ 6085 Kaseda Tojinbara ☎ 8am-5pm ☎ Jan. 1 ☎ 2 spaces

Jojunin (pictured left; 125 yen each) made from local kumquats and Nagisa-no-shio-manju (right; 110 yen each) filled with mild salt from Fukiagehama



Satsuma Wakaayu (140 yen each) filled with soft mochi

A major event at one of the three largest sand dunes in Japan

SAND FESTIVAL at Fukiagehama

The SAND FESTIVAL is a major event in Kagoshima. It takes place in Minamisatsuma City, which is home to Fukiagehama, one of the three largest sand dunes in Japan. The massive sand sculptures carved out of hardened sand from Fukiagehama are a sight worth seeing. There is also a fireworks show and other exciting events!



SAND FESTIVAL mascot Sandy-kun



Sunami-chan



One of Japan's largest events featuring sand

SAND FESTIVAL at Fukiagehama
☎ 0993-76-1609 (SAND FESTIVAL Executive Committee)

This is the oldest sand-related event in Japan, held during the extended holidays in May. The intricate sand sculptures made entirely of sand display high-level artistry and are worth taking time to appreciate. Also check out the sand sculpting workshops, market, town walk, and other attractions.

☎ 2648 Kaseda Kawabata (near Minamisatsuma City Hall) ☎ 1,000 spaces



The sand sculpting workshop is popular with children



During the festival period, you can view fireworks and some sand sculptures that are lit up at night
In 2021, a sand sculpture expressing gratitude to the healthcare workers working during the COVID-19 pandemic was unveiled

Q&A about the Sand Festival

Q-Since when has the festival been held?
The first festival was held at Shinkawa Beach in August 1987. It will be held for the 35th time in 2022.

Q-Can I visit the sand sculptures even on rainy days?
Yes, you can visit on rainy days. The sand sculptures are coated with a special glue, so a little rain will not affect them.

Q-What kinds of sand sculptures will be on display?
A theme is chosen each year based on current trends, and works are created based on that theme. All of the works the artists create from their own imaginations are stunning to see!

Q-Where is the festival held?
Since 2021, the festival has been held in the "machinaka (central)" area close to Minamisatsuma City Hall.



The heart of Minamisatsuma,
where nature and history coexist

KASEDA AREA

About the area

Kaseda is home to Fukiagehama, one of Japan's three largest sand dunes, and many recreational spots and visitor attractions are scattered around the area. It is also a town rich in history, with the Kakoinohara Site, where pottery from over 12,000 years ago was unearthed, and the Kaseda Fumoto Samurai District, which was designated as a Japan Heritage Site.



① The festival space features seasonal flowers for people to enjoy. ② The boardwalk at the back of the park offers a panoramic view of Fukiagehama.

Play in a vast nature park while feeling the sea breeze

Kagoshima Prefectural Fukiagehama Seaside Park

●鹿児島県立吹上浜海浜公園
☎ 0993-52-0910 (Management office)
MAP Back D1 198 634 876*55

Blending in with the natural surroundings, this vast park has a wide range of facilities that can be used for a fee, including a campground that is available year-round, a large playground, athletic field, roller skating rink, and swimming pool (summer only). There is also a bike rental service that can be enjoyed within the park.

📍 1936-2 Kaseda Takahashi 🅞 Free entry 🕒 8:30am-5pm (open until 6pm on weekends and national holidays during April, May, June, and September; open until 7pm in July and August) 🗓 Dec. 29-31 🅑 Approx. 1,000 spaces

A distillery where you can learn about traditional shochu production

Satsuma Bansei Shomeikan

●薩摩萬世松明酒
☎ 0993-52-0648 MAP Back D1 198 665 248*68

The distillery and exhibition hall of Bansei Shuzo, which has over 120 years of history. In addition to observing the *shochu* liquor production process, visitors can learn about sweet potatoes and the history of Minamisatsuma in the first and second exhibition rooms. The store also sells products that can be found nowhere else.

📍 1940-25 Kaseda Takahashi 🅞 Free entry 🕒 9am-4pm 🗓 Sat., Sun., national holidays 🅑 15 spaces



① See the process of distilling *shochu* in wooden barrels and aging it in clay pots. ② The signature product, Satsuma Bansei, is 1,320 yen for a 720 ml bottle.



Enjoy the seaside area to the fullest!

Fun-filled 1-DAY PLAN

This comprehensive plan takes you to Fukiagehama Seaside Park, a major recreational spot in Minamisatsuma City, and surrounding attractions. You can spend the entire day sightseeing, having fun, and eating!

🚲 Cycle in comfort along a long, straight path.



Cycling in the sea breeze

Sunset Bridge

●サンセットブリッジ
☎ 0993-52-0910 (Fukiagehama Seaside Park Management Office)
MAP Back D1 198 665 623*65

A 405-meter-long bridge for pedestrians and bicyclists stretching across the mouth of the Manose River. It is surrounded by vast tidal flats where you can see clusters of Hibiscus hamabo (a natural monument of Japan) and observe aquatic birds. If time allows, be sure to watch the sun set into the sea.

📍 1936-2 Kaseda Takahashi 🅞🅘🅙 Free entry 🅑 25 spaces



① The silhouette of the bridge is beautiful against the golden sky.

⚙ Equipment and other artifacts are on display. These artifacts, including the aircraft itself, are recognized as Important Aviation Heritage.



For a renewed commitment to peace

Bansei Peace Memorial Museum

●万世特攻平和祈念館
☎ 0993-52-3979 MAP Back D1 198 665 051*27

The Bansei Air Base was built in late 1944 as the final base for the special attack (kamikaze) unit of the Japanese Imperial Army. This museum was later built on the site of the air base to commemorate the souls of those who flew out from the base, as well as to pray for lasting peace. In addition to letters and mementos left behind by the soldiers as they neared their missions, many valuable artifacts are on display, including a Type O Three-Seat Reconnaissance Seaplane (Aichi E13A).
📍 1955-3 Kaseda Takahashi 🅞 Admission: 310 yen 🕒 9am-5pm (last entry at 4:30pm) 🗓 Dec. 31-Jan. 1 🅑 50 spaces



① A Type O Three-Seat Reconnaissance Seaplane retrieved from Fukiagehama in 1992.



① Yorozuyoni, a monument to commemorate the Bansei Special Attack Unit, has also been erected on the site.



② The pumpkin dessert comes in a cute round shape.

Bring home sweets made from Kaseda-grown kabocha squash

Somekawa

●お菓子の逢川
☎ 0993-52-3835
MAP Back D2 198 604 299*04

A patisserie offering a wide selection of reasonably priced cakes. The most popular item is the pumpkin dessert (330 yen) consisting of three layers: custard pudding made from ripe Kaseda-grown kabocha squash, whipped cream, and sponge cake. It's the store's specialty.

📍 55 Kaseda Kominato 🕒 9am-8pm 🗓 No fixed holidays 🅑 2 spaces (🅑 also available at Joganji Temple)

Sweat it out and get refreshed at a natural onsen

Kaseda Seaside Onsen Yuraku

●かぜだ海浜温泉 ゆらく
☎ 0993-52-0226
MAP Back D1 198 665 076*52

The natural onsen water that gushes out from 1,300 meters underground is rich in minerals that help to relieve muscle pain and fatigue, making this the perfect place to soothe a tired body after a day of fun. This spa is fully equipped with an atmospheric open-air rock bath, far infrared sauna, carbonated bath, and more.

📍 1952-2 Kaseda Takahashi 🅞 Bath: 420 yen 🕒 10am-10pm (last entry at 9:30pm) 🗓 2nd Tue. of each month 🅑 30 spaces



② Enjoy soaking in the open air surrounded by a Japanese-style garden.

Explore a little further

A must-visit spot for whisky lovers!

Hombo Shuzo MARS Tsunuki Distillery

●本坊通達 マルス津貫蒸溜所
☎ 0993-55-2121 MAP Back D3 198 364 587*46

The southernmost whisky distillery on Japan's main islands. The MARS whisky produced here is immensely popular, as is the whisky produced by the same company in Nagano Prefecture. Inside the distillery, visitors can learn about the whisky's history and production process and see the cask warehouse built from stone. At Hojo, located adjacent to the distillery, you can taste MARS whisky and Hombo Shuzo's authentic *shochu* for a fee.

📍 6594 Kaseda Tsunuki 🕒 9am-4pm 🗓 Open year round (some temporary closures) 🅑 24 spaces



② See the pot stills, which determine the quality of the whisky. ③ The first single malt whisky from Tsunuki, Tsunuki The First, was released in 2021.



Fruits you pick yourself taste especially good!

Grape picking

Blessed with a mild climate, Minamisatsuma City has four vineyards where you can enjoy harvesting grapes. The grapes grow in big clusters and are super sweet and juicy.

➡ Aihoshi Fruit Farm's vineyard



Aihoshi Fruit Farm
☎ 090-2710-1249 MAP Back D2 198 634 143*84

📍 2765-48 Kaseda Takahashi
Open from early June to early August

Nishimura Kajuen
☎ 0993-52-3793 MAP Back D2 198 634 144*84

📍 2764-57 Kaseda Takahashi
Open from late June to early August

Asahi Farm
☎ 099-296-9980 (office) MAP Back E1 198 820 101*15

📍 6246-1 Kinpocho Ono
Open from late July to early September

Ojisan no Budoen
☎ 090-2563-1488 MAP Back E1 198 820 101*15

📍 6246-1 Kinpocho Ono
Open from late July to early September

Check out the nearby local products store

Kaseda Local Product Center Lupinus

●かぜだ物産センター るびなす
☎ 0993-53-8739 MAP Back D1 198 665 107*54

② The perfect spot to find souvenirs

This center offers a wide variety of products made in Minamisatsuma, from processed agricultural products to handicrafts. It also has a restaurant that serves dishes made from lots of seasonal vegetables.

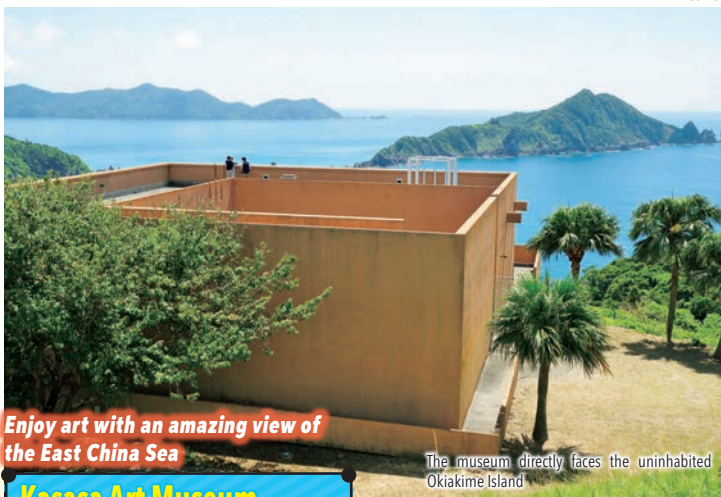
📍 1952-2 Kaseda Takahashi 🕒 10am-10pm (last entry at 9:30pm) 🗓 2nd Tue. of each month, Dec. 31, Jan. 1 🅑 15 spaces

➡ Right: Sakyu Rakkyo (500 yen). Left: Nansatsu kumquat powdered drink (200 yen)



① A stone cask warehouse lined with barrels of unblended whisky. This is where the whisky is slowly aged.

KASASA AREA



Enjoy art with an amazing view of the East China Sea

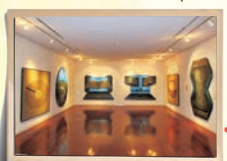
Kasasa Art Museum (Kurose Lookout Museum)

● 立寄美術館 高瀬展望ミュージアム
☎ 0993-63-0990
MAP Back B2 1505 125 825*03

This museum exhibits the works of Michinori Kurose, a painter who was born in Kasasa. Located on a hill overlooking the sea, the museum offers a view of Okiakime Island, which has been selected as one of the Minamisatsuma Kaido Hakkei (eight coastal views of Minamisatsuma). Enjoy looking at the works of art against the beautiful backdrop of the East China Sea and mountains.

● 8666-1 Kasasacho Akougi ☎ Free entry
● 9am-5pm ☎ Tue., Dec. 30-Jan. 1 ● 20 spaces

☞ The pieces on display are regularly switched with other works by Michinori Kurose from the museum's collection



Always fresh and delicious, delivered straight from the port!

Drive-In Oura

● 送魚料理ドライブイン大浦
☎ 0993-62-2654
MAP Back C2 1505 223 875*31

A restaurant located along National Route 226. They offer a wide variety of set meals featuring fresh seafood delivered directly from the local fishing port. The most recommended item is the Iso Teishoku (1,650 yen), a set meal that comes with aradaki, a dish of bony fish parts that are simmered for over three days until even the bones are edible.

● 29500-2 Ouracho ● 11am-2:30pm (last order at 2:30pm), 5pm-8:30pm (last order at 8:30pm)
☎ Mon. (open if Mon. is a national holiday, and closed the following day) ● 20 spaces

☞ The restaurant has tanks to keep the fish fresh and only prepares dishes when an order is received



☞ Left: Counter and floor seating are available. Right: The sushi set meal offers an assortment of super fresh fish (1,320 yen)



Enjoy fish caught in Kasasa

Gyokurin ● 飲食店 五福

☎ 0993-63-1958 MAP Back B2 1505 247 201*62

The restaurant purchases its fish from the Kataura fishing port every morning, so it is guaranteed to be fresh. Their fresh seafood dishes have been a favorite of locals for many years. Besides the popular sushi set meal, the local sweet shrimp set meal and local fish set meal (each 1,650 yen) are also recommended.

● 2306-13 Kasasacho Kataura ● 11am-2pm, 5pm-9pm (last order at 9pm) *Closing times are subject to change ☎ Wed., 4th Thu. of each month ● 30 spaces

☞ Buen-don, a rice bowl full of seafood. Comes with a salad and sea lettuce miso soup and pickles for 1,490 yen



☞ Enjoy the beautiful view of the ria coast during the daytime ☞ It is also one of Kagoshima's best sunset spots for Instagram

Experience nature with your whole body in a wide-open space!

Mt. Kamegaoka ● 観光地 五福

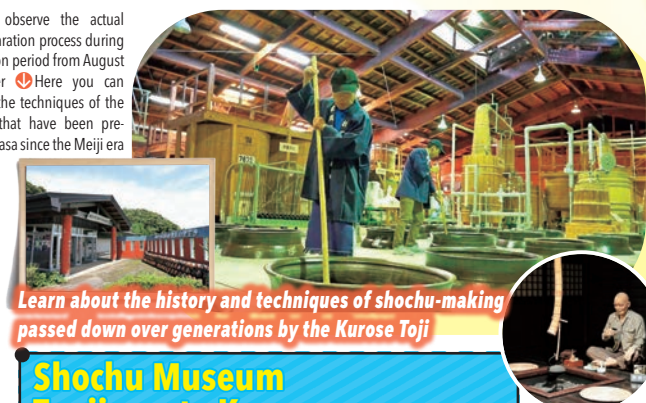
☎ 0993-53-2111 (Tourism and Exchange Section, Minamisatsuma City)

The name Kamegaoka (lit., "turtle hill") comes from the shape of the rock face at the top of the mountain, which is said to resemble a turtle. The two viewpoints at the summit (387 m) are named "East China Sea Viewpoint" and "Hoshifuruoka Viewpoint," and from here you can see the contrasting scenery of the ria coast to the south and Fukiagehama (one of Japan's three largest sand dunes) to the north at the same time. You can reach the area below the summit by car.

● Ouracho ● ☎ Free entry ● Available



☞ Mt. Kamegaoka as seen from Bonotsu. The rugged rock face leaves a strong impression



Learn about the history and techniques of shochu-making passed down over generations by the Kurose Toji

Shochu Museum Toujinosato Kasasa

● 焼酎づくり伝承館 杜氏の里 笠沙
☎ 0993-63-1002 MAP Back B2 1505 155 074*45

A toji is a guild of expert shochu makers. This facility was built to preserve and pass on the techniques and traditions of the Kurose Toji that have been passed down from the Meiji era (1868-1912) as a form of cultural heritage. There is an exhibition hall with video and panel displays explaining the shochu-making process, as well as a distillery where visitors can observe the production process. Shochu is also available for sale.

● 6762 Kasasacho Akougi ☎ Admission: 310 yen (free to enter lobby and store) ● 9am-5pm ☎ Dec. 29-Jan. 3 ● 58 spaces

☞ An old man having his dareyame (evening drink) greets visitors in the exhibition hall



☞ An old man having his dareyame (evening drink) greets visitors in the exhibition hall

By area MINAMI SATSUMA CITY

RECOMMENDED SPOTS



The elevation is 636 m at the summit. You can reach the summit by parking at the Mt. Kinpo Observatory and hiking for 20 to 30 minutes to the top



Enjoy a casual hike

Mt. Kinpo ● 金峰山

☎ 0993-53-2111 (Tourism and Exchange Section, Minamisatsuma City)
MAP Back E1 1505 198 766 816*57

Mt. Kinpo is known as a famous and sacred peak in the region, and it is also one of the Three Famous Mountains of the Satsuma Peninsula along with Mt. Kaimon and Mt. Noma. The cold and clear spring water from Mt. Kinpo nurtures the fields in the Kinpo area and produces an abundance of delicious Kinpo Koshihikari rice, which is said to have the earliest harvest time of rice produced on Japan's main islands.

● Kinpocho ● ☎ Free entry ● 27 spaces



☞ Tanokasa are stone deities that are worshipped to pray for a good harvest. Many can still be found in the rice fields

There's more!



The "sunset in a cocktail glass"

Don't miss this special sight around Christmastime

007 Film Monument

● 映画「007」撮影記念碑 MAP Back B3 1505 069 372*74
☎ 0993-53-2111 (Tourism and Exchange Section, Minamisatsuma City)

A monument commemorating the filming of the 007 movie, built on a hill overlooking the port. When the table next to the monument is made to resemble a cocktail glass during the Christmas season, the view of the "sunset in a cocktail glass" can be seen.

● Bonotsucho Akime ● ☎ Free entry ● Available

Savor one of the most popular brands of Black wagyu beef at a low price

Yakiniku Jirocho ● 焼肉 次郎長

☎ 0993-67-1470 MAP Back C4 1505 761 402 653*43

This restaurant specializes in Japanese Black wagyu beef from Kagoshima and is run by a butcher shop that has been a local favorite for over 40 years. They serve Bonotsu Japanese Black beef from cattle raised in the pleasant environment of the Bonotsu area. A variety of dishes are available during the day. At night, popular dishes include yakiniku (Japanese BBQ) and the Tokusei Jirocho Shabu Nabe hotpot (2,750 yen, reservation required). ● 8840-1 Bonotsucho Tomari ● 11:30am-1:30pm (last order at 1:30pm), 5pm-10pm ☎ Tue. ● 20 spaces



☞ Yakiniku set meal (1,300 yen). The homemade sauce is regarded as excellent

KINPO AREA

Get the indigo color known as "Japan blue"

aizomeya / Studio No. 4

● 藍染屋 Studio No.4
☎ 0993-78-2897 MAP Back F1 1505 198 800 738*82

An indigo dye studio (aizomeya) that uses traditional techniques handed down from the Edo period (1603-1868). They spend a lot of time and effort to create the deep, transparent quality of the color known as "Japan blue." In addition to exhibiting and selling their works, they offer tours of the studio and dyeing workshops for visitors.

● 7764-1 Kinpocho Daizaka ● 10am-6pm ☎ No fixed holidays ● 5 spaces



☞ Each piece is hand-dyed and has a unique look

A Japanese sweets store with a cute exterior

Konrori Dango Daizakaten ● 金品利大ご本店

☎ 0993-68-0185 MAP Back E1 1505 198 798 102*41

This Japanese sweets store has an eye-catching exterior shaped like dango (rice flour dumplings). The store uses homemade flour to give their dango the natural sweet flavor of rice. On sale are local Kagoshima sweets such as shinko dango (soy sauce glaze) and kakaran dango (leaf-wrapped).



☞ Assortment of mini dango in four popular flavors, including kinako (roasted soybean flour) and mitarashi (sweet soy sauce glaze), for 330 yen

A spot visited by James Bond fans from around the world

Minshuku Ganjin-so ● 民宿 かんじん荘

☎ 0993-68-0652 MAP Back B3 1505 069 579*01

☞ A monument inscribed with the signatures of Sean Connery, Tetsuro Tamba, and others who starred in the film

☞ You Only Live Twice movie posters, with designs unique to each country, are also on display



This is the place where Sean Connery and other stars would take a break during the filming of You Only Live Twice in the Bonotsucho Akime area. The inn is a must-visit spot for James Bond enthusiasts, as it displays valuable memorabilia such as the shooting schedule, cast list, dioramas, and photos of the film set. ● 400 Bonotsucho Akime ● 9am-5pm ☎ Open year round ● 10 spaces

☞ Left: Replicas of the secret spy weapons that appeared in the film, donated by a fan of the franchise. Right: The inn's location right in front of Akime Port makes it popular with those who love fishing

The place where the abbot Jian Zhen recorded his first steps in Japan

Jian Zhen Memorial Museum

● 鑑真記念館
☎ 0993-68-0288 MAP Back C3 1505 069 815*50

Bonotsucho Akime is the place where Jian Zhen (Ganjin in Japanese), a high priest of the Tang dynasty, first landed in Japan in 753 CE. The memorial museum introduces the life and great achievements of Jian Zhen, who brought Buddhist teachings and his knowledge of pharmacology to Japan, through videos and panels. ● 225-2 Bonotsucho Akime ☎ Admission: 210 yen ● 9am-5pm (last entry at 4:30pm) ☎ Mon. (open if Mon. is a national holiday, and closed the following day; some temporary closures) ● 50 spaces



☞ A stone statue of the abbot Jian Zhen sits in front of the memorial museum

OURA AREA

BONOTSU AREA

Map of Central Kaseda



Map of the Satsuma Peninsula



